

貨櫃尺寸表 Containers Size Chart

以下各項數據係為參考數值,實際尺寸因各船公司使用不同來源工廠所製造而有所誤差.

The following data are for reference use. The actual dimensions are subject to difference due to manufacturing by various shipping companies using different source factories.

* 淨重 Net Weight(s) = 空櫃的重量 Empty Container weight(s)

20' Steel (20 呎鐵櫃)

容量 Capacity	最大裝載量 Mix. Load	*淨重 Net Weight	
1,172 cubic feet	48,170Lb	4,740 Lb	
33.20 cubic meters	21,850 Kg	2,150 Kg	
貨櫃尺寸 Cntr Size	長 (L)	寬 (W)	高 (H)
內部尺寸 Internal Size	19'4"	7'8"	7'10"
	5.90 m	2.35 m	2.39 m
外部尺寸 External Size	19'10"	8'0"	8'6"
	6.06 m	2.44 m	2.59 m
門徑 Doorway		7'8"	7'6"
		2.35 m	2.27 m



40' Steel (40 呎鐵櫃)

容量 Capacity	最大裝載量 Mix. Load	*淨重 Net Weight	
2,389 cubic feet	59,000 Lb	8,200 Lb	
67.60 cubic meters	26,760 Kg	3,720 Kg	
貨櫃尺寸 Cntr Size	長 (L)	寬 (W)	高 (H)
內部尺寸 Internal Size	39'6"	7'8"	7'10"
	12.03 m	2.35 m	2.39 m
外部尺寸 External Size	40'0"	8'0"	8'6"
	12.19 m	2.44 m	2.59 m
門徑 Doorway		7'8"	7'6"
		2.35 m	2.28 m



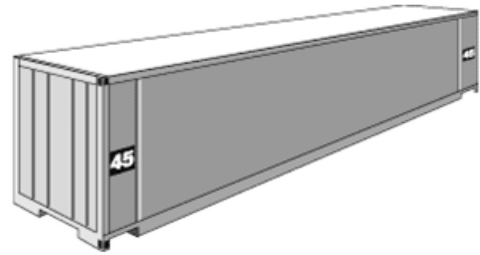
40' Steel High Cube (40 呎鐵製高櫃)

容量 Capacity	最大裝載量 Mix. Load	*淨重 Net Weight	
2,693 cubic feet	58,980 Lb	8,220 Lb	
76.3 cubic meters	26,750 Kg	3,730 Kg	
貨櫃尺寸 Cntr Size	長 (L)	寬 (W)	高 (H)
內部尺寸 Internal Size	39'6"	7'8"	8'10"
	12.03 m	2.35 m	2.70 m
外部尺寸 External Size	40'0"	8'0"	9'6"
	12.19 m	2.44 m	2.90 m
門徑 Doorway		7'8"	8'6"
		2.35 m	2.58 m



45' Steel High Cube (45 呎鐵製高櫃)

容量 Capacity	最大裝載量 Mix. Load	*淨重 Net Weight	
3,038 cubic feet	62,770 Lb	10,000 Lb	
86.0 cubic meters	28,480 Kg	4,540 Kg	
貨櫃尺寸 Cntr Size	長 (L)	寬 (W)	高 (H)
內部尺寸 Internal Size	44'6"	7'9"	8'10"
	13.56 m	2.35 m	2.70 m
外部尺寸 External Size	45'0"	8'0"	9'6"
	13.72 m	2.44 m	2.90 m
門徑 Doorway		7'8"	8'6"
		2.34 m	2.59 m



冷凍貨櫃 REFRIGERATED CARGO CONTAINERS

20' Steel (20 呎鐵櫃)

容量 Capacity	最大裝載量 Mix. Load	*淨重 Net Weight	
1,003 cubic feet	60,520 Lb	6,680 Lb	
28.4 cubic meters	27,450 Kg	3,030 Kg	
貨櫃尺寸 Cntr Size	長 (L)	寬 (W)	高 (H)
內部尺寸 Internal Size	17'10"	7'6"	7'5"
	5.44 m	2.29 m	2.26 m
外部尺寸 External Size	19'10"	8'0"	8'6"
	6.06 m	2.44 m	2.59 m
門徑 Doorway	無資料	7'6"	7'5"
		2.29 m	2.26 m



40' Steel (40 呎鐵櫃)

容量 Capacity	最大裝載量 Mix. Load	*淨重 Net Weight	
2,383 cubic feet	64,490 Lb	10,470 Lb	
67.5 cubic meters	29,250 Kg	4,750 Kg	
貨櫃尺寸 Cntr Size	長 (L)	寬 (W)	高 (H)
內部尺寸 Internal Size	38'0"	7'6"	8'5"
	11.58 m	2.29 m	2.54 m
外部尺寸 External Size	40'0"	8'0"	9'6"
	12.2 m	2.44 m	2.9 m
門徑 Doorway	無資料	7'6"	8'5"
		2.29 m	2.57 m



特殊貨櫃 SPECIAL EQUIPMENT

20' Open Top (20 呎開頂櫃)

容量 Capacity	最大裝載量 Mix. Load	*淨重 Net Weight	
1,130 cubic feet	62,240 Lb	4,960 Lb	
32.2 cubic meters	28,230 Kg	2,250 Kg	
貨櫃尺寸 Cntr Size	長 (L)	寬 (W)	高 (H)
內部尺寸 Internal Size	19'4"	7'8"	7'7"
	5.9 m	2.35 m	2.31 m
外部尺寸 External Size	無資料	7'8"	7'5"
		2.34 m	2.27 m
門徑 Doorway	18'1"	7'3"	無資料
	5.5 m	2.22 m	



40' Open Top (40 呎開頂櫃)

容量 Capacity	最大裝載量 Mix. Load	*淨重 Net Weight	
2,306 cubic feet	58,602 Lb	8,598 Lb	
65.5 cubic meters	26,580 Kg	3,900 Kg	
貨櫃尺寸 Cntr Size	長 (L)	寬 (W)	高 (H)
內部尺寸 Internal Size	39'6"	7'8"	7'7"
	12.04 m	2.34 m	2.31 m
外部尺寸 External Size	無資料	7'8"	7'5"
		2.34 m	2.26 m
門徑 Doorway	38'1"	7'0"	無資料
	11.6 m	2.14 m	



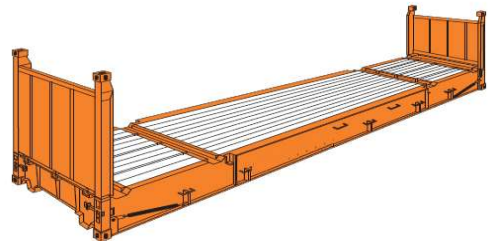
20' Flat Rack (20 呎平板貨櫃)

容量 Capacity	最大裝載量 Mix. Load	*淨重 Net Weight	
	68,917 Lb	6,041 Lb	
	31,260 Kg	2,740 Kg	
貨櫃尺寸 Cntr Size	長 (L)	寬 (W)	高 (H)
內部尺寸 Internal Size	19'10"	7'4"	7'4"
	6.04 m	2.23 m	2.23 m
外部尺寸 External Size	20'0"	8'0"	8'6"
	6.06 m	2.44 m	2.59 m



40' Flat Rack (40 呎平板貨櫃)

容量 Capacity	最大裝載量 Mix. Load	*淨重 Net Weight	
	88,295 Lb	10,913 Lb	
	40,050 Kg	4,950 Kg	
貨櫃尺寸 Cntr Size	長 (L)	寬 (W)	高 (H)
內部尺寸 Internal Size	39'11"	7'4"	6'5"
	12.18 m	2.23 m	1.96 m
外部尺寸 External Size	40'0"	8'0"	8'6"
	12.19 m	2.44 m	2.59 m



萬海貨櫃規格 Wan Hai Line Container Specifications

貨櫃種類 CONTAINER TYPE	載重量 PLAYLOAD WEIGHT (KG)			內部尺寸 INTERIOR MEASUREMENT (M)			
	體重 GROSS	空櫃重 TARE	*淨重 NET	長度 LENGTH	寬度 WIDTH	高度 HEIGHT	容積 CUBIC M.
20'							
DRY STEEL	24,000	2,370	21,630	5.898	2.352	2.394	33.20
REEFER	24,000	3,050	20,950	5.449	2.290	2.244	26.70
OPEN TOP	24,000	2,580	21,420	5.629	2.212	2.311	32.00
FLAT RACK	34,000	2,900	31,100	5.652	2.208	2.234	27.90
40'							
8'6" DRY STEEL	30,480	4,000	26,480	12.031	2.352	2.394	67.74
8'6" REEFER	30,480	4,520	25,960	11.690	2.250	2.247	57.10
8'6" OPEN TOP	30,480	4,290	26,190	11.763	2.212	2.311	65.40
8'6" FLAT RACK	34,000	5,870	28,130	11.786	2.236	1.968	51.90
9' DRY STEEL	30,480	4,190	26,290	12.026	2.340	2.538	71.42
9'6" DRY STEEL	30,480	4,200	26,280	12.031	2.352	2.699	76.40
9'6" REEFER	30,480	4,670	25,810	11.583	2.290	2.542	64.30

(淨重指以當年度新造貨櫃為標準，貨櫃承受重量將隨使用年限增加而降低)

(The net weight refers to the new container built in the current year as the standard, the weight of the container will decrease with the increase in the using time)